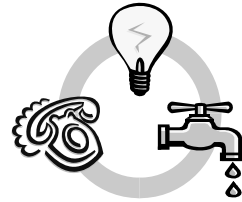


INDUSTRY PUBLIC UTILITIES COMMISSION CITY OF INDUSTRY

REGULAR MEETING AGENDA
APRIL 21, 2016 9:00 A.M.



President Mark D. Radecki
Commissioner Abraham N. Cruz
Commissioner Roy Haber, III
Commissioner Cory C. Moss
Commissioner Newell W. Ruggles



Location: City Council Chamber, 15651 East Stafford Street, City of Industry, California

Addressing the Commission:

- ▶ **Agenda Items:** Members of the public may address the Commission on any matter listed on the Agenda. Anyone wishing to speak to the Commission is asked to complete a Speaker's Card which can be found at the back of the room and at the podium. The completed form should be submitted to the City Clerk prior to the Agenda item being called and prior to the individual being heard by the Commission.
- ▶ **Public Comments (Non-Agenda Items):** Anyone wishing to address the Commission on an item not on the Agenda may do so during the "Public Comments" period. In order to conduct a timely meeting, there will be a three-minute time limit per person for the Public Comments portion of the Agenda. State law prohibits the Commission from taking action on a specific item unless it appears on the posted Agenda. Anyone wishing to speak to the Commission is asked to complete a Speaker's Card which can be found at the back of the room and at the podium. The completed card should be submitted to the City Clerk prior to the Agenda item being called and prior to the individual being heard by the Commission.

Americans with Disabilities Act:

- ▶ In compliance with the ADA, if you need special assistance to participate in any City meeting (including assisted listening devices), please contact the City Clerk's Office (626) 333-2211. Notification of at least 48 hours prior to the meeting will assist staff in assuring that reasonable arrangements can be made to provide accessibility to the meeting.

Agendas and other writings:

- ▶ In compliance with SB 343, staff reports and other public records permissible for disclosure related to open session agenda items are available at City Hall, 15625 East Stafford Street, Suite 100, City of Industry, California, at the office of the City Clerk during regular business hours, Monday through Friday 9:00 a.m. to 5:00 p.m. Any person with a question concerning any agenda item may call the City Clerk's Office at (626) 333-2211.
-

1. Call to Order
2. Flag Salute
3. Roll Call
4. Public Comments

5. **BOARD MATTERS**

5.1 Consideration of the Register of Demands

RECOMMENDED ACTION: Approve the Register of Demands and authorize the appropriate City Officials to pay the bills.

5.2 Consideration of the minutes of the December 10, 2015 regular meeting

RECOMMENDED ACTION: Approve as submitted.

5.3 Discussion and direction regarding the authorization of the La Puente Valley County Water District's General Manager to proceed with the purchase of materials for Phase 2 of the 16-inch waterline relocation at Valley Boulevard and Workman Mill Road in support of the Alameda Corridor-East Construction Authority's Puente Avenue Grade Separation Project

RECOMMENDED ACTION: Authorize La Puente Valley County Water District's General Manager to proceed with the purchase of materials and services, for an estimated amount not to exceed \$43,000.00.

5.4 Report from General Manager for the La Puente Valley County Water District

RECOMMENDED ACTION: Receive and file the report.

6. Adjournment. Next regular meeting: Thursday, May 19, 2016 at 9:00 a.m.

INDUSTRY PUBLIC UTILITIES COMMISSION

ITEM NO. 5.1

Industry Public Utilities Commission
Authorization For Payment of Bills
Meeting of April 21, 2016

<u>FUND</u>	<u>DESCRIPTION</u>	<u>DISBURSEMENTS</u>
560	Industry Public Utilities	22,632.75
	TOTAL ALL FUNDS	22,632.75

<u>BANK</u>	<u>NAME</u>	<u>DISBURSEMENTS</u>
BOFA	Bank of America	22,632.75
	TOTAL ALL BANKS	22,632.75

**Industry Public Utilities Commission
Board Meeting
April 21, 2016**

Check	Date		Payee Name	Check Amount
IPUC.CHK - IPUC Water BofA Checking				
40278	04/05/2016		SO CALIFORNIA EDISON COMPANY	\$15,313.97
	Invoice	Date	Description	Amount
	2016-00001209	04/02/2016	03/02-04/01/16 SVC - 1991 WORKMAN MILL U	\$15,313.97
40279	04/21/2016		CNC ENGINEERING	\$2,713.60
	Invoice	Date	Description	Amount
	44553	03/10/2016	ON-CALL WATER SYSTEM MAINTENANCE PROGRAM	\$1,284.19
	44617	03/31/2016	ON-CALL WATER SYSTEM MAINTENANCE PROGRAM	\$1,429.41
40280	04/21/2016		INDUSTRY PUBLIC UTILITIES	\$1,400.00
	Invoice	Date	Description	Amount
	MAR-16	03/30/2016	REIMBURSE PAYROLL - MARCH 2016	\$1,400.00
40281	04/21/2016		PHILIPS, PAUL J.	\$122.14
	Invoice	Date	Description	Amount
	03/22/16	03/22/2016	REIMBURSE FOR EXPENSES - LUNCH MEETINGS	\$122.14
40282	04/21/2016		ROWLAND WATER DISTRICT	\$3,083.04
	Invoice	Date	Description	Amount
	I-03312016-A	04/04/2016	CONTRACT SVC - MARCH 2016	\$2,306.39
	I-03312016-B	04/04/2016	CONTRACT SVC - MARCH 2016	\$776.65

Checks	Status	Count	Transaction Amount
	Total	5	\$22,632.75

INDUSTRY PUBLIC UTILITIES COMMISSION

ITEM NO. 5.2

INDUSTRY PUBLIC UTILITIES COMMISSION
REGULAR MEETING MINUTES
CITY OF INDUSTRY, CALIFORNIA
DECEMBER 10, 2015
PAGE 1

CALL TO ORDER

The Regular Meeting of the Industry Public Utilities Commission of the City of Industry, California, was called to order by President Mark D. Radecki at 8:30 a.m. in the City of Industry Council Chamber, 15651 East Stafford Street, California.

FLAG SALUTE

The flag salute was led by President Mark D. Radecki.

ROLL CALL

PRESENT: Mark D. Radecki, President
Cory C. Moss, Commissioner
Abraham Cruz, Commissioner
Newell W. Ruggles, Commissioner

ABSENT: Roy Haber, Commissioner

STAFF PRESENT: Paul J. Philips, City Manager; James Casso, City Attorney; John Ballas, Engineer; and Diane M. Schlichting, Acting Deputy City Clerk.

PUBLIC COMMENTS

There were no public comments.

CONSIDERATION OF REGISTER OF DEMANDS

MOTION BY COMMISSIONER RUGGLES, AND SECOND BY COMMISSIONER MOSS TO APPROVE THE REGISTER OF DEMANDS AND AUTHORIZE THE APPROPRIATE CITY OFFICIALS TO PAY THE BILLS. MOTION CARRIED 4-0, BY THE FOLLOWING VOTE:

AYES:	COMMISSIONERS :	CRUZ, RUGGLES, MOSS, RADECKI
NOES:	COMMISSIONERS:	NONE
ABSENT:	COMMISSIONERS:	HABER
ABSTAIN:	COMMISSIONERS:	NONE

INDUSTRY PUBLIC UTILITIES COMMISSION
REGULAR MEETING MINUTES
CITY OF INDUSTRY, CALIFORNIA
DECEMBER 10, 2015
PAGE 2

CONSIDERATION OF THE MINUTES OF THE OCTOBER 8, 2015 REGULAR MEETING.

MOTION BY COMMISSIONER CRUZ, AND SECOND BY COMMISSIONER RUGGLES TO APPROVE THE MINUTES AS SUBMITTED. MOTION CARRIED 4-0, BY THE FOLLOWING VOTE:

AYES:	COMMISSIONERS :	CRUZ, RUGGLES, MOSS, RADECKI
NOES:	COMMISSIONERS:	NONE
ABSENT:	COMMISSIONERS:	HABER
ABSTAIN:	COMMISSIONERS:	NONE

REPORT FROM GENERAL MANAGER FOR THE LA PUENTE VALLEY COUNTY WATER DISTRICT

General Manager Galindo presented a report to the Commission.

MOTION BY COMMISSIONER MOSS, AND SECOND BY COMMISSIONER CRUZ TO RECEIVE AND FILE THE REPORT. MOTION CARRIED 4-0, BY THE FOLLOWING VOTE:

AYES:	COMMISSIONERS :	CRUZ, RUGGLES, MOSS, RADECKI
NOES:	COMMISSIONERS:	NONE
ABSENT:	COMMISSIONERS:	HABER
ABSTAIN:	COMMISSIONERS:	NONE

ADJOURNMENT

There being no further business, the Industry Public Utilities Commission adjourned at 8:52 a.m.

MARK D. RADECKI
PRESIDENT

INDUSTRY PUBLIC UTILITIES COMMISSION
REGULAR MEETING MINUTES
CITY OF INDUSTRY, CALIFORNIA
DECEMBER 10, 2015
PAGE 3

CECELIA DUNLAP
DEPUTY CITY CLERK

INDUSTRY PUBLIC UTILITIES COMMISSION

ITEM NO. 5.3



INDUSTRY PUBLIC UTILITIES COMMISSION

P.O. BOX 3366 • CITY OF INDUSTRY • CALIFORNIA 91744
(626) 333-2211 • Fax (626) 961-6795 • www.cityofindustry.org

Mark D. Radecki, President
Abraham N. Cruz, Commissioner
Roy M. Haber, III, Commissioner
Cory C. Moss, Commissioner
Newell W. Ruggles, Commissioner

Paul J. Philips, Public Utilities Director
James M. Casso, General Counsel
Cecelia Dunlap, Assistant Secretary

MEMORANDUM

To: Honorable President and Commission Board Members

From: Paul J. Philips, City Manager *Paul J. Philips*

Staff: Alex Gonzalez, Director of Development Services and Administration *AG*

Date: April 21, 2016

SUBJECT: Authorize Purchase of Materials for Phase Two of the Sixteen Inch Waterline Relocation at Valley Boulevard and Workman Mill Road to Support the ACE Puente Avenue Grade Separation Project

Industry Public Utilities Water Operations has received a request from La Puente Valley County Water District to purchase supplies to relocate a sixteen inch waterline in support of the Alameda Corridor-East Construction Authority's (ACE) Puente Avenue Grade Separation Project. Documentation is attached providing support that informal bid procedures have been followed according to Industry Municipal Code Section 3.52.080 for public projects less than \$125,000.

It is recommended that the Commission authorize the La Puente Valley County Water District's General Manager to proceed with the purchase of materials and services to construct the waterline relocation, which are estimated at a not to exceed price of \$43,000.

Exhibits

A: Memo dated March 14, 2016 from La Puente Valley County Water District Requesting Purchase Authorization

PJP:AG:mk

EXHIBIT A

**Memo dated March 14, 2016 from La Puente Valley County Water District
Requesting Purchase Authorization**

[Attached]

Memo



To: Alex Gonzalez, Director of Administrative Services
From: Greg B. Galindo, General Manager
Date: March 14, 2016
Subject: Materials Purchase for Phase 2 of the 16" Waterline Relocation at Valley Blvd and Workman Mill Road to Support the ACE Puente Avenue Grade Separation Project

SUMMARY

Purpose - Authorize the purchase of materials and services for Phase 2 of the 16" asbestos cement pipe (ACP) waterline relocation, to support the ACE Puente Avenue Grade Separation Project.

Recommendation - Authorize the LPVCWD's General Manager to proceed with the purchase of materials as detailed in the quote from S&J Supply for a not to exceed price of \$43,000.

Fiscal Impact - The Industry Public Utilities - Water Operations 2015-2016 Fiscal Year Budget appropriates \$150,000 for Waterline Improvements. The recommended materials purchase and related contract services are within this budget appropriation.

Discussion

The ACE Puente Avenue Grade Separation Project required a number of utility relocations to be completed, to make way for the designed underpass at Valley Blvd and Puente Avenue (Workman Mill Road). The Industry Public Utilities (IPU) Water System has an existing 16" ACP waterline in Valley Blvd and Workman Mill Road. This waterline was required to be relocated to allow room for relocations of the County's storm drain and sewer lines that are in close proximity.

As the contracted manager and operator of the IPU Water System, District Staff engaged Civiltec Engineers to design the relocation of the 16" ACP waterline. The relocation required two phases of work. Phase 1 included the abandonment of a portion of the 16" waterline. This abandonment was completed in July of 2015 and allowed for other utility relocation work to proceed without the danger of failure of the 16" waterline during construction. The customers of the IPU served by this waterline experienced only temporary interruption of service during the Phase 1 work. The other utility relocation work is now complete and Phase 2 of the relocation work is now needed. Phase 2 includes reconstructing the 16" ACP waterline, using 16" ductile iron pipe along a similar alignment and placing the new waterline into service. The plans for Phase 2 are enclosed for your reference.

The City has a current agreement with W.A. Rasic Construction to perform on-call water system construction work within the Industry Public Utilities Water System. The Phase 1 construction work (labor and equipment) was completed in accordance with the provisions of this agreement. The estimated cost for

labor and equipment for Phase 2 of this work is \$64,000. An estimate from W.A. Rasic is enclosed for your reference. This cost is within the COI Project No. 1415 not to exceed contract value.

Water pipeline materials are also required to complete the Phase 2 work, which are not covered under the on-call services agreement. In support of this project, District staff requested quotes from three waterworks suppliers in the area. Three quotes were provided, which are enclosed for your reference. Below is a summary of the quotes.

Quote	S&J Supply	Western Waterworks	United Waterworks
Materials	\$38,245.17	\$38,806.40	\$42,714.82
Tax	\$3,442.07	\$3,492.58	\$3,844.33
Total	\$41,687.24	\$42,298.98	\$46,559.15

S&J Supply located in Whittier, CA, provided the lowest quote of the three. District staff has verified these numbers to be accurate and we recommend purchasing these materials from S&J Supply. Work on Phase 2 is scheduled to begin in April 2016.

There are some ancillary services and materials that will also be required, which the District will secure, such as surface restoration, backfill material, compaction testing, asbestos cement pipe disposal and waterline chlorination and water quality testing. None of these services are anticipated to be in excess of \$10,000. If you have any questions on the information provided or would like additional information, please contact me at your earliest convenience.

Respectfully Submitted,

Greg B. Galindo

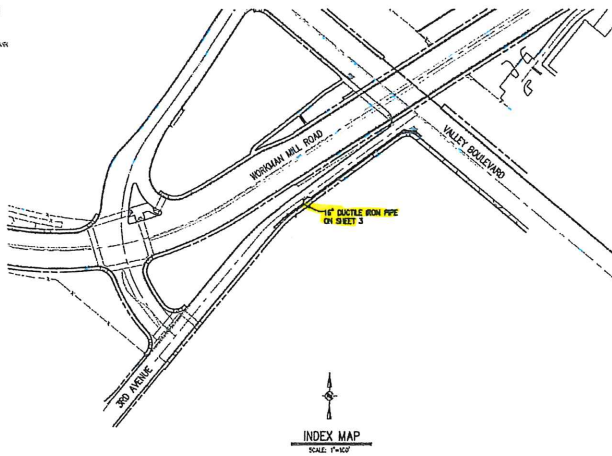
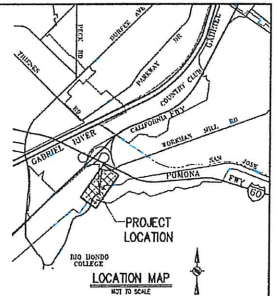
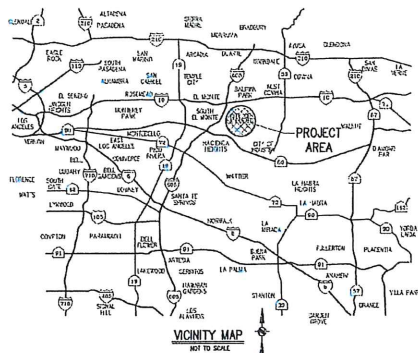
General Manager

Enclosures

- 16" ACP Waterline Relocation Phase 2 Plans
- Estimate from W.A. Rasic for Labor and Equipment to Construct the Waterline Relocation (In Accordance with COI Project No. 1415 Contract)
- Waterworks Suppliers' Material Quotes

LA PUENTE VALLEY COUNTY WATER DISTRICT

CONSTRUCTION DRAWINGS FOR THE PROPOSED PUENTE GRADE SEPARATION 16" WATER MAIN RELOCATION PHASE 2



BEST MANAGEMENT PRACTICES FOR CONSTRUCTION ACTIVITIES NOTE:

1. EROSION CONTROL AND OTHER POLLUTANTS MUST BE RETAINED ON SITE AND MAY NOT BE TRANSPORTED FROM THE SITE VIA SHEET FLOW, SWALE, PAVED DRIVE, WETLAND, STORAGE, CREEPS OR HOLES.
2. STOPGAPES OF EARTH AND OTHER CONSTRUCTION RELATED MATERIALS MUST BE PROTECTED FROM BEING DISLOCCATED FROM THE SITE BY THE FORCE OF WIND OR WATER.
3. FUEL, OIL, POLYMER AND OTHER TOXIC MATERIALS MUST BE STORED IN APPROVED, WELL TIGHT LIDS AND KEPT TO CONTAINERS, OUT OF THE WAY AND PROTECTED AND OFF-ROAD STORAGE CONTAINERS ARE TO BE PROVIDED FROM THE MATERIALS MUST BE COVERED OR IMMEDIATELY AND DISPOSED OF IN A PROPER MANNER, SPILLS MAY NOT BE WASHED INTO THE DRAINAGE SYSTEM.
4. NON-STORM WATER RUNOFF FROM EQUIPMENT AND VEHICLE WASHING AND OTHER ACTIVITY SHALL BE CONTAINED AT THE PROJECT SITE.
5. EXCESS OR WASTE CONCRETE MAY NOT BE WASHED INTO THE PUBLIC WAY OR ANY OTHER DRAINAGE SYSTEM. PROVISIONS SHALL BE MADE TO RETAIN EXCESSIVE WASTES ON SITE UNTIL THEY CAN BE DISPOSED OF AS SOLID WASTE.
6. TRASH AND CONSTRUCTION RELATED SOLID WASTES MUST BE DEPOSITED INTO A COVERED RECEPTACLE TO PREVENT CONTAMINATION OF ADJACENT AREAS AND EROSION. BY HAND, COVERED MUST ON-SITE ONLY, BUT NOT CITY, GENERATED WASTE CITY OF PUENTE VALLEY MUST BE DEPOSITED IN COVERED RECEPTACLE & DEPOSITED AT AN APPROPRIATE RECEPTACLE AT CONSTRUCTION SITE.
7. SEDIMENTS AND OTHER MATERIALS MAY NOT BE TRACKED FROM THE SITE BY VEHICLE TRAFFIC. THE CONSTRUCTION ENTRANCE DRIVEWAYS MUST BE STABILIZED AS TO PREVENT SEDIMENTS FROM BEING WASHED INTO THE PUBLIC WAY. ACCIDENTAL DISCHARGES MUST BE STOPPED IMMEDIATELY AND NOT BE WASHED DOWN BY RAIN OR OTHER WAYS.
8. ANY EXISTING WITH DISTURBED SOILS OR BARRIERS OF VEGETATION MUST BE STABILIZED SO AS TO PREVENT EROSION BY WIND AND WATER.

LIST OF DRAWINGS

SHEET NO.	DESCRIPTION
SHEET 1	TITLE SHEET, VICINITY MAP, AND LOCATION MAP
SHEET 2	GENERAL NOTES AND LEGEND
SHEET 3	PIPING LAYOUT PLAN
SHEET 4	GENERAL DETAILS

CUSTOMER COPY

NOTE: THIS DRAWING IS ATTACHED TO AND SHALL BE PART OF PROJECT NO. 201313764 AND IS NOT TO BE REPRODUCED OR TRANSMITTED IN ANY FORM OR BY ANY MEANS, ELECTRONIC OR MECHANICAL, INCLUDING PHOTOCOPYING, RECORDING, OR BY ANY INFORMATION STORAGE AND RETRIEVAL SYSTEM, WITHOUT THE WRITTEN PERMISSION OF THE ENGINEER OR ARCHITECT.

<p>Know what's below. Call before you dig.</p>		REFERENCES					APPROVED BY:	PLANS PREPARED BY:	118 West Lime Avenue Monrovia, CA 91016 Phone: 626.337.0598 Fax: 626.303.7557 Web: www.civiltec.com	LA PUENTE VALLEY COUNTY WATER DISTRICT 16" WATER MAIN RELOCATION - PHASE 2 VICINITY MAP, LOCATION MAP, INDEX MAP AND LIST OF DRAWINGS
		NO.	DESCRIPTION	APP.	DATE					

GENERAL NOTES

- 1 THE WATER SYSTEM SHALL BE CONSTRUCTED IN ACCORDANCE WITH THE PLANS, SPECIFICATIONS, STANDARD SPECIFICATIONS FOR PUBLIC WORKS CONSTRUCTION LATEST EDITION AND SHALL BE SUBJECT TO THE DISTRICT'S WATER DEPARTMENT'S ACCEPTANCE AS A CONDITION OF COMPLETION OF WORK BY THE CONTRACTOR. IN ADDITION, ALL TRENCH BACKFILL, AS PAVING, AND SLOPED BACKFILL SHALL BE SUBJECT TO THE DISTRICT ENGINEER'S ACCEPTANCE AS A CONDITION OF COMPLETION OF WORK BY THE CONTRACTOR.

- 2 THE CONTRACTOR SHALL BE RESPONSIBLE FOR OBTAINING ALL NECESSARY PERMITS FROM ALL LOCAL AGENCIES, STATE AND FEDERAL. THE CONTRACTOR SHALL VERIFY THE NECESSARY PERMITS FOR ANY RELOCATION OF PUBLIC UTILITIES WITH THE OWNER OF THE UTILITIES. THE OWNER OF ANY UTILITIES WHICH ARE TO BE RELOCATED OR REMOVED SHALL BE RESPONSIBLE FOR THE NECESSARY PERMITS FROM THE APPROPRIATE AGENCIES. THE CONTRACTOR SHALL VERIFY THE RESPONSIBILITY FOR COSTS INCURRED TO CHANGE AND REPLACEMENT OF SAID UTILITIES.

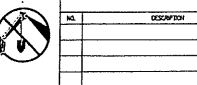
- 3 THE CONTRACTOR SHALL BE RESPONSIBLE FOR ANY CONSTRUCTION WITH OTHER SUB-CONTRACTORS AS RELATED TO ACCORDANCE WITH CONSTRUCTION OPERATIONS.

LEGEND

Legend table listing symbols for ASPHALT CONCRETE, COVER LINE, CONCRETE AGGREGATE BASE, CURB, GUTTER, etc. with corresponding symbols and descriptions.

ASBESTOS CEMENT REMOVAL

- A. THE CONTRACTOR REMOVING ASBESTOS CEMENT PIPE SHALL BE SECURED BY APPROPRIATE CALIFORNIA AGENCIES IN ACCORDANCE WITH THE PROVISIONS OF THE ASBESTOS HAZARD ABATEMENT RESPONSE ACT (SHEILA) AND INCORPORATED AND CHANGES WITH THE CONTRACTOR'S STATE LICENSE BOARD, ARGUMENT TO STATE AND FEDERAL LAW. IT IS THE RESPONSIBILITY OF THE CONTRACTOR TO INSURE THAT ANY EMPLOYEES ENGAGED IN ASBESTOS-RELATED ACTIVITIES HAVE APPROPRIATE ASSISTANCE.



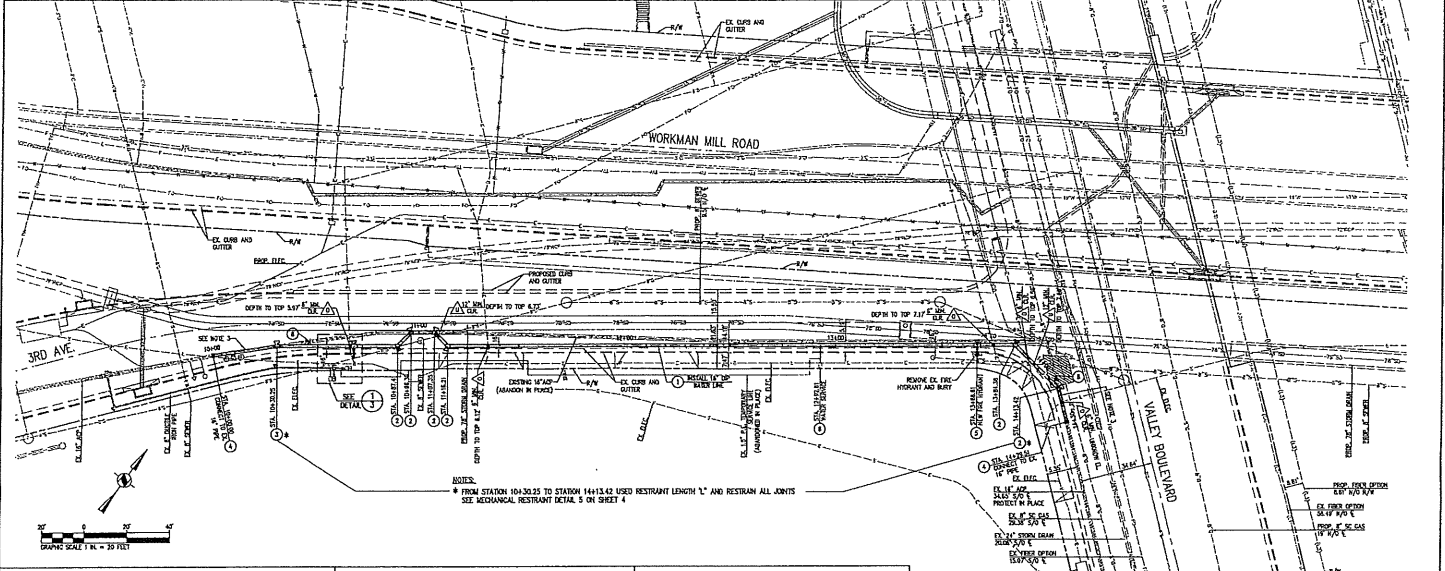
REFERENCES table with columns for REF. NO., DESCRIPTION, APP. DATE, and APP. BY.



APPROVED BY: CIVILTEC Engineering Inc. 118 West Lime Avenue, Moorpark, CA 91016

LA PUENTE VALLEY COUNTY WATER DISTRICT, 16" WATER MAIN RELOCATION - PHASE 2, GENERAL NOTES AND LEGENDS

Table with columns: WORKNO, DATE/IT, DESIGNED, DISG, DRAWN, JT, SCALE, AS SHOWN, WORKNO DATE, FEBRUARY 2016, JOB NO., 201310A, SHEET 2 OF 4

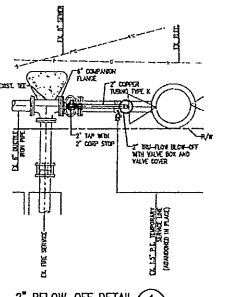
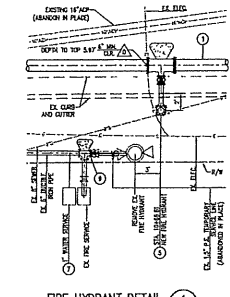


NOTE: FROM STATION 10+30.25 TO STATION 14+13.42 USED RESTRAINT LENGTH "L" AND RESTRAIN ALL JOINTS SEE MECHANICAL RESTRAINT DETAIL 5 ON SHEET 4

CONSTRUCTION NOTES:

- 1. PURCHASER AND INSTALL 12" DUCTILE IRON PIPE, CLASS 200.
- 2. PURCHASER AND INSTALL 12" x 12" DUCTILE IRON BELL END WITH MECHANICAL RESTRAINT BLOCK PER DETAIL 1 SHEET 4 AND RESTRAIN ALL JOINTS PER DETAIL 5 SHEET 4.
- 3. PURCHASER AND INSTALL 12" x 12" DUCTILE IRON BELL END WITH MECHANICAL RESTRAINT BLOCK PER DETAIL 1 SHEET 4 AND RESTRAIN ALL JOINTS PER DETAIL 5 SHEET 4.
- 4. PURCHASER AND INSTALL 12" TRANSITION COUPLER, IRONIC SHT. BLK. PER DETAIL 3 ON SHEET 4, RESTRAIN ALL JOINTS.
- 5. PURCHASER AND INSTALL 12" WRENCH END AND RESTRAINT TO EX. WRENCH PER DETAIL 4 ON SHEET 4.
- 6. PURCHASER AND INSTALL 12" WRENCH END AND RESTRAINT TO EX. WRENCH PER DETAIL 4 ON SHEET 4.
- 7. BUY PIPE AND FLUG WITH CONCRETE.
- 8. MAKE EX. CURB AND GUTTER 2" BLOW-OFF ASSEMBLY IF COMPANION FLANG PER DETAIL 2 SHEET 4.

NOTE:
 1. INSTALL SOLUTION BIT BETWEEN FLANGES OF IRREGULAR METAL.
 2. REPLACE DAMAGED GASKETS, CURB, AND GUTTER TO ADJACENT JOINT.
 3. ALL ADJ. REMOVAL SHALL ADHERE TO THE SPECIFICATIONS INDICATED ON SHEET 2.



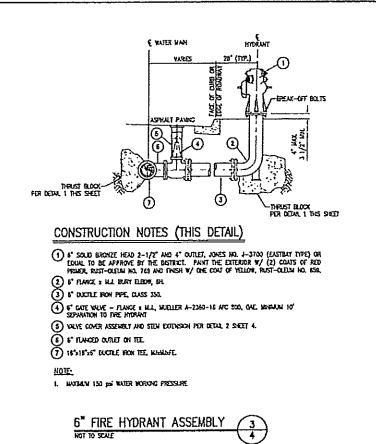
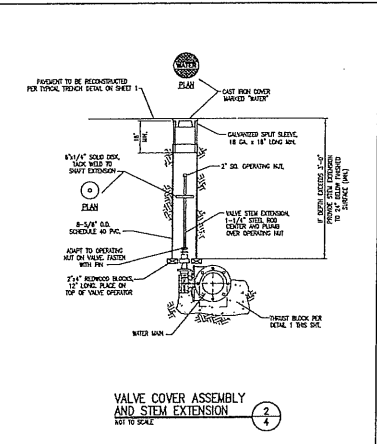
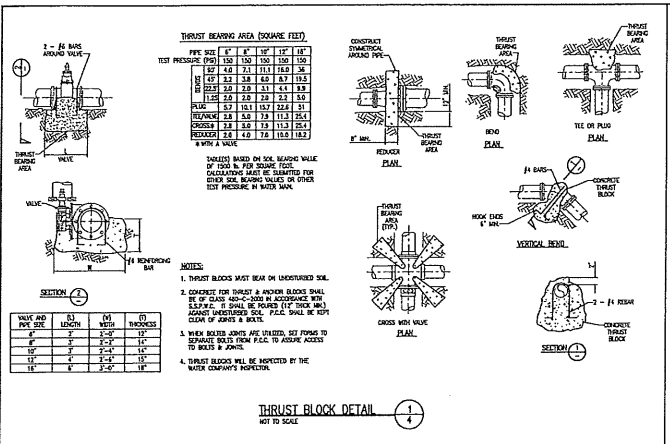
REFERENCES	
NO.	DESCRIPTION



APPROVED BY:
 LA PUENTE VALLEY COUNTY WATER DISTRICT

PLANS PROVIDED BY:
CIVILTEC Engineering Inc.
 118 West Lime Avenue
 Moorpark, CA 91016
 Phone: 626.357.0588
 Fax: 626.303.7937
 Web: www.civiltec.com

LA PUENTE VALLEY COUNTY WATER DISTRICT							
16" WATER MAIN RELOCATION - PHASE 2							
PIPING LAYOUT PLAN							
NO.	DATE	DESIGNED	DRG.	SCALE	BY	SCALE	AS SHOWN



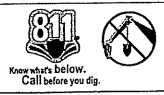
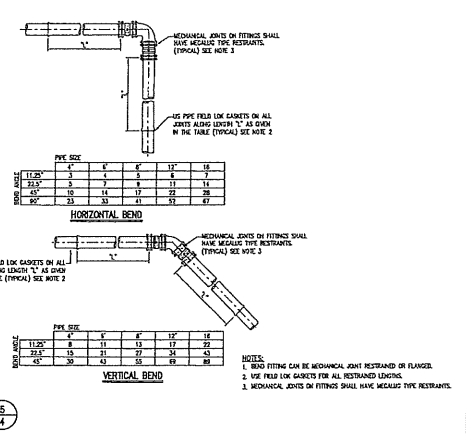
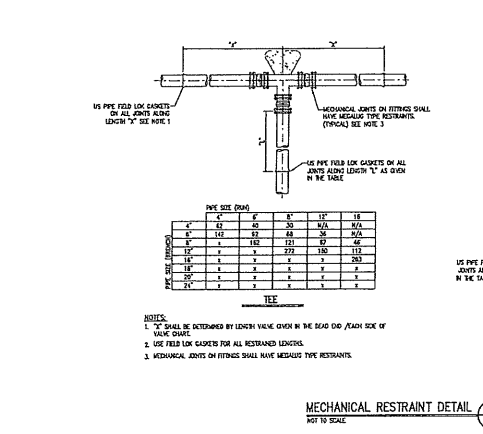
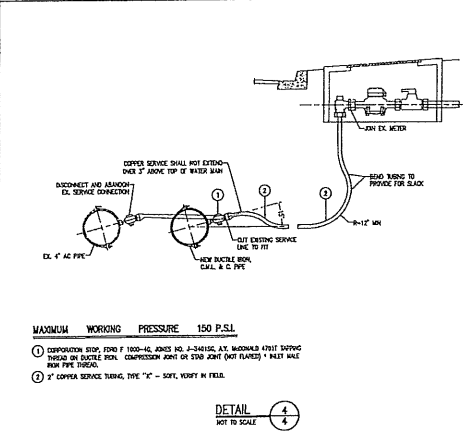
CONSTRUCTION NOTES (THIS DETAIL)

- 4" SOLID BRIDGE HEAD 2-1/2" AND 4" OUTLET JONES NO. 3-3700 (EASTWAY TYPE) OR EQUAL TO BE APPROVED BY THE DISTRICT. PAINT THE EXTERIOR WITH COAT OF RED PRIMER, BUSH-HELM NO. 100 AND FINISH BY ONE COAT OF YELLOW, RUST-OLINE NO. 500.
- 4" FLANGE & 1/2" BOLT CLASS 50.
- 4" GATE VALVE - FLANGE & 1/2" BOLT CLASS 50.
- VALVE COVER ASSEMBLY AND STEM EXTENSION PER DETAIL 2 SHEET 4.
- 4" FLANGED OUTLET ON TEE.
- 1/2" X 1/2" X 1/2" SCALE FROM THE MAINLINE.

NOTE: 1. WORKMAN 150 psi WATER WORKING PRESSURE.

6" FIRE HYDRANT ASSEMBLY

NOT TO SCALE



REFERENCES				
NO.	DESCRIPTION	APP.	DATE	NO.

APPROVED BY: [Signature]

PLANS PREPARED BY: CIVILTEC engineering inc.

118 West Lime Avenue
Moorpark, CA 91016
Phone: 626.257.0588
Fax: 626.303.7957
Web: www.civiltec.com

LA PUENTE VALLEY COUNTY WATER DISTRICT

16" WATER MAIN RELOCATION - PHASE 2

GENERAL DETAILS

DESIGN DATE	DESIGNER	DATE	DESIGNER	DATE	SCALE	AS SHOWN
FEBRUARY 2016	JOB NO.	20160324	SHEET	4	OF	4



March 1, 2016

La Puente Valley County Water District
112 N. First Street
P.O. Box 3136
La Puente, CA 91744

Sent via email: ggalindo@lapuentewater.com

Attention: Greg Galindo

Reference: Puente Grade Separation 16" Water Main Relocation Phase 2
WAR Bid S160225B

Dear Greg,

Our budget proposal to provide the requested labor, equipment, and materials per our Master Contract necessary for the work on the for referenced project in accordance with plans developed by Civiltec Engineering dated February 2016 Sheets 1 through 4 is **\$64,000.00**

Budget Price is subject to the following additional exclusions and conditions:

- All conditions, rates, and markup per the Master Contract with City of Industry/CNC Engineering. Work on a T&M basis.
- City of Industry/CNC to provide all pipeline materials including sand, aggregate, concrete and asphalt. All permitting, etc. by others.
- Based on one (1) mobilization for all work. If additional work phasing is required then please make appropriate adjustment to your budget.
- Final asphalt paving and concrete by others.
- No permanent sidewalk repair – temporary AC patching only as we assume road relocation to re-align all hardscape improvements.
- AC Pipe Removal will require specialty hydraulic snap cutters. This budget assumes that we will be paid for the rental and use of this specialty tool.
- 100LF of ACP removal budgeted. Disposal by others.
- This budget assumes that the existing alignment between 12+00 and 13+90 will be far enough away where removal of the existing ACP is not necessary.
- WAR not responsible for damage or collapse of the existing C&G along the new 16" DIP alignment. Space does not provide adequate room to install pipe with standard industry backhoe without possibility of damage.

Sincerely,
W.A. Rasic Construction Co., Inc.

Shane K. Sato
Division Manager

S&J Supply Co., Inc.

pipeline materials

S & J SUPPLY COMPANY, INC.
 13105 FLORENCE AVE
 SANTA FE SPRINGS, CA 90670
 562-944-7433
 Fax 562-944-7224



Quotation

EXPIRATION DATE	QUOTE NUMBER
03/07/2016	S100066394
S & J SUPPLY COMPANY, INC. 13105 FLORENCE AVE SANTA FE SPRINGS, CA 90670 562-944-7433 Fax 562-944-7224	PAGE NO.
	1 of 3

QUOTE TO:

SHIP TO:

LA PUENTE VALLEY COUNTY WATER DIST
 PO BOX 3136
 LA PUENTE, CA 91744

LAPUENTE SHOP ACCT INDUSTRY
 10063 PROCTOR
 CITY OF INDUSTRY, CA 91746

CUSTOMER NUMBER	CUSTOMER PO NUMBER	JOB NAME / REF NUMBER	SALESPERSON	
4957			DEBRA DURAN	
WRITER	SHIP VIA	TERMS	SHIP DATE	FREIGHT ALLOWED
DEBRA DURAN	OT OUR TRUCK	Net 30 Days	05/15/2016	No
ORDER QTY	DESCRIPTION		UNIT PRICE	EXT PRICE
2ea	SB44118901890 16" SB 441 18.46-18.90X18.46-18.90 FLEX CPLG W/ ALLOY B&N		368.410/ea	736.82
36ft	DIP350TJ18 18" CL350 TJ DIP CL ACL / AC		49.510/ft	1782.36
2ea	E1118DEC 18" EBAA MEGA LUG KIT F/ DI		219.000/ea	438.00
2ea	IMJR1816 18" X 16" DI MJ RED CL L/A IMP		263.600/ea	527.20
435ft	DIP350TJ16 16" CL350 TJ DIP CL ACL / AC		38.300/ft	16660.50
18ea	UFLG16 16" US FIELD LOK GSKT		265.250/ea	4774.50
6ea	IMJ416 16" DI MJ 45 ELL CL L/A IMP		231.200/ea	1387.20
1ea	IMJ116 16" DI MJ 11-1/4 ELL CL L/A IMP		236.400/ea	236.40
19ea	E1116DEC 16" EBAA MEGA LUG KIT F/ DI		157.000/ea	2983.00
2ea	POFT166 16" X 6" DI POXFLG TEE CL DOM		1221.500/ea	2443.00
18ft	DIP350TJ6 6" CL350 TJ DIP CL ACL / AC		12.200/ft	219.60
4ea	E1106DEC 6" EBAA MEGA LUG KIT F/ DI		38.000/ea	152.00
2ea	KGV MFLC5156 6" KNDY C515 DI MJXFLG RWGV VLV OL L/A W/ SS T316 TRIM, 2" OPT NUT, NDZ STEM & BROWN EPOXY		620.000/ea	1240.00
** Continued on Next Page *			Subtotal	
			S&H Charges	
			Amount Due	

S&J Supply Co., Inc.

pipeline materials

S & J SUPPLY COMPANY, INC.
 13105 FLORENCE AVE
 SANTA FE SPRINGS, CA 90670
 562-944-7433
 Fax 562-944-7224



Quotation

EXPIRATION DATE	QUOTE NUMBER
03/07/2016	S100066394
S & J SUPPLY COMPANY, INC. 13105 FLORENCE AVE SANTA FE SPRINGS, CA 90670 562-944-7433 Fax 562-944-7224	PAGE NO.
	2 of 3

QUOTE TO:

SHIP TO:

LA PUENTE VALLEY COUNTY WATER DIST
 PO BOX 3136
 LA PUENTE, CA 91744

LAPUENTE SHOP ACCT INDUSTRY
 10063 PROCTOR
 CITY OF INDUSTRY, CA 91746

CUSTOMER NUMBER	CUSTOMER PO NUMBER	JOB NAME / REF NUMBER	SALESPERSON	
4957			DEBRA DURAN	
WRITER	SHIP VIA	TERMS	SHIP DATE	FREIGHT ALLOWED
DEBRA DURAN	OT OUR TRUCK	Net 30 Days	05/15/2016	No
ORDER QTY	DESCRIPTION		UNIT PRICE	EXT PRICE
6ea	NARG6 6" 150# NON ASB RING GSKT 1/16TH		2.000/ea	12.00
2ea	HE86 6" X 8" CI HYD EXT CL BO 6H		58.235/ea	116.47
1ea	CF8 8" X 8" DI COMP FLG F/ STEEL 13-1/2" X 8" ACTUAL FLG SIZE		41.000/ea	41.00
2ea	C850PC6SY CLOW 850 FIRE HYD PC 6H 1-1/2" PENT NUT, ** SAFETY YELLOW ** PLASTIC CAPS		1149.000/ea	2298.00
2ea	HBML426 6" X 42" DI MJ HYD BURY CL 6H L/A		164.550/ea	329.10
1ea	AY74704B222 2" 74704B-22 NO LEAD MIPXCTS BALL CORP		170.850/ea	170.85
1ea	AY74753222 2" 74753-22 NO LEAD MIPXCTS ADPT		53.200/ea	53.20
1ea	AY747532215 1-1/2" 74753-22 NO LEAD MIPXCTS ADPT		39.400/ea	39.40
1ea	AY6133T15 1-1/2" 6133T CTS SS INSERT		1.650/ea	1.65
1ea	IBRNLCA15 1-1/2" BRS CAP NO LEAD IMP		7.500/ea	7.50
1ea	J9791615IP 16" X 1-1/2" IP J979 D/S BRS SDL		402.220/ea	402.22
1ea	AY74704B2215 1-1/2" 74704B-22 NO LEAD MIPXCTS BALL CORP		108.000/ea	108.00
** Continued on Next Page *			Subtotal	
			S&H Charges	
			Amount Due	

S&J Supply Co., Inc.

pipeline materials

S & J SUPPLY COMPANY, INC.
 13105 FLORENCE AVE
 SANTA FE SPRINGS, CA 90670
 562-944-7433
 Fax 562-944-7224



Quotation

EXPIRATION DATE	QUOTE NUMBER
03/07/2016	S100066394
S & J SUPPLY COMPANY, INC. 13105 FLORENCE AVE SANTA FE SPRINGS, CA 90670 562-944-7433 Fax 562-944-7224	
PAGE NO.	
3 of 3	

QUOTE TO:

SHIP TO:

LA PUENTE VALLEY COUNTY WATER DIST
 PO BOX 3136
 LA PUENTE, CA 91744

LAPUENTE SHOP ACCT INDUSTRY
 10063 PROCTOR
 CITY OF INDUSTRY, CA 91746

CUSTOMER NUMBER	CUSTOMER PO NUMBER	JOB NAME / REF NUMBER	SALESPERSON	
4957			DEBRA DURAN	
WRITER	SHIP VIA	TERMS	SHIP DATE	FREIGHT ALLOWED
DEBRA DURAN	OT OUR TRUCK	Net 30 Days	05/15/2016	No
ORDER QTY	DESCRIPTION		UNIT PRICE	EXT PRICE
1ea	AY74602B2215 1-1/2" 74602B-22 NO LEAD CTS BALL AMS		202.000/ea	202.00
1ea	AY76101MW15 1-1/2" 76101MW NO LEAD CUST SRVC VLV W/ LW		127.850/ea	127.85
2ea	AA6001640PCX12 ARMCST A6001640 PLMR RPM MTR BOX 17" X 30" X 12" 2" SOCAL SWS		88.000/ea	176.00
2ea	AA6001643DZ ARMCST A6001643DZ PLMR 2PC COVER 17" X 30" - 2" IRWD SOCAL		59.000/ea	118.00
2ea	AA6000482 ARMCST A6000482 PLMR 1PC COVER 9" X 14" 2" SOCAL RDG LID		16.900/ea	33.80
1ea	KTF550 KUPFERLE TF550 BLOW OFF		427.550/ea	427.55
1ea	BID SALES TAX		3442.070/ea	3442.07
THIS IS ONLY S & J SUPPLY COMPANY, INC. INTERPRETATION OF WHAT IS NEEDED TO DO THE JOB. PLEASE VERIFY ALL MATERIALS AND QUANTITIES. *****			Subtotal	41687.24
QUOTE DOES NOT INCLUDE APPLICABLE SALES TAX UNLESS NOTED			S&H Charges	0.00
			Amount Due	41687.24



SEL - S EL MONTE, CA
 2024 MERCED AV
 S EL MONTE, CA - 91733
 PHONE: (909)597-7000 FAX: (626)579-1389

Smooth Running Jobs

PROPOSAL

QUOTE DATE	EXPIRATION DATE	QUOTE NO.
03/07/16	04/06/16	411674-00
JOB ID		PAGE NO.
PHASE II 16" RELOC		1



CUST #: 12040

BILL TO: LA PUENTE VALLEY COUNTY WATER
 P O BOX 3136
 LA PUENTE, CA 91744-0136

SHIP TO: LA PUENTE VALLEY COUNTY WATER
 15629 HUDSON
 LA PUENTE, CA 91744

INSTRUCTIONS: ATTN: KEITH BOWMAN

SHIP POINT	VIA	SHIPPED	TERMS
SEL - S EL MONTE, CA	OUR TRUCK		NET 30 DAYS

CONTACT	KEITH BOWMAN
MOBILE PHONE	(626) 890-0847
EMAIL	kbowman@lapuentewater.com

LN	PRODUCT AND DESCRIPTION	ORDERED	BO	SHIPPED	UM	PRICE	UM	DISCOUNT	NET AMOUNT
<p>- DRIVER PLEASE NOTE: PLEASE CALL 20 MIN PRIOR TO DELIVERY TO MEET AT YARD RAY (626)841-1353 KEITH (626)890-0847</p> <p>- DELIVERY HOURS 8:00-4:00 M-F</p> <p>- REFERENCE PHASE II 16" RELOCATION</p>									
1	201-18971897700# 501-18.97 X 18.97 X 7 SHOP COAT SBR STANDARD B	2			EA	442.30	EA	0.00	884.60
2	DITP350-18# 18 CL 350 DI TJ PIPE W/GASKET	36			FT	50.55	FT	0.00	1819.80
3	248-I18# RG ROMAGRIP ACCESSORY PACK FOR 18 IN. DI PIPE	2			EA	181.30	EA	0.00	362.60
4	103097# RED 18X16 MJ C153 CL-ND	2			EA	265.20	EA	0.00	530.40
5	DITP350-16# 16 CL 350 DI TJ PIPE W/GASKET	450			FT	39.58	FT	0.00	17811.00
6	FLG-16 16 FIELD LOK GASKET	18			EA	256.20	EA	0.00	4611.60
7	M45-16 16 DI SSB MJ 45	6			EA	252.80	EA	0.00	1516.80
8	101895# BEND 16 MJ 1 1/4 C153 CL-ND	1			EA	256.50	EA	0.00	256.50
9	UFRI400-DA-16 16 MJ RESTRAINT W/ACC DI PIPE	19			EA	144.00	EA	0.00	2736.00
10	POFT1606# 16x6 DI POxFLG TEE	2			EA	535.30	EA	0.00	1070.60
11	FLG-16 16 FIELD LOK GASKET	2			EA	256.20	EA	0.00	512.40
12	DITP350-06# 6 CL 350 DI TJ PIPE W/GASKET	18			FT	12.05	FT	0.00	216.90
13	UFRI400-DA-6 6 MJ RESTRAINT W/ACC DI PIPE	4			EA	30.40	EA	0.00	121.60

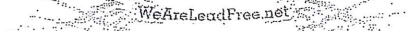
Continued

In accordance with California law AB1953 "Lead Free" initiative, beginning June 15, 2009 we will no longer accept returns for 85/5/5 brass products.

This price is valid for 30 days after the quote date.

Thank you for the opportunity to provide this quote.

NOTE: This price does not include tax, shipping or installation.





SEL - S EL MONTE, CA
 2024 MERCED AV
 S EL MONTE, CA - 91733
 PHONE: (909)597-7000 FAX: (626)579-1389

Smooth Running Jobs

PROPOSAL

QUOTE DATE	EXPIRATION DATE	QUOTE NO.
03/07/16	04/06/16	411674-00
JOB ID		PAGE NO.
PHASE II 16" RELOC		2



CUST #: 12040

BILL TO: LA PUENTE VALLEY COUNTY WATER
 P O BOX 3136
 LA PUENTE, CA 91744-0136

SHIP TO: LA PUENTE VALLEY COUNTY WATER
 15629 HUDSON
 LA PUENTE, CA 91744

INSTRUCTIONS: ATTN: KEITH BOWMAN

SHIP POINT	VIA	SHIPPED	TERMS	CONTACT	KEITH BOWMAN
SEL - S EL MONTE, CA	OUR TRUCK		NET 30 DAYS	MOBILE PHONE	(626) 890-0847
				EMAIL	kbowman@lapuentewater.com

LN	PRODUCT AND DESCRIPTION	ORDERED	BO	SHIPPED	UM	PRICE	UM	DISCOUNT	NET AMOUNT
14	GVFM-06	2			EA	657.35	EA	0.00	1314.70
	6 FLGXMJ RW GATE VLV OL NDZ STEM 316 B/N								
15	JM60-06	6			EA	1.50	EA	0.00	9.00
	6 RING GASKET 1/16 NON-ASBESTOS								
16	HE-608-6	2			EA	62.80	EA	0.00	125.60
	6X8 6H HYD EXT GROOVED								
17	BF-0602	1			EA	51.65	EA	0.00	51.65
	6X2 DI TAP BLIND FLG								
18	850	2			EA	1205.00	EA	0.00	2410.00
	6X4X2-1/2 HYD 6H W/ PL CAP 1-1/2 PENT NUT								
19	MJB642-6	2			EA	188.30	EA	0.00	376.60
	6X42 6H MJ HYD BURY								
20	FB1100-7	1			EA	191.60	EA	0.00	191.60
	2 BALLCORP IPXPJ CTS								
21	C84-77	1			EA	58.85	EA	0.00	58.85
	2 ADAPTER MIPXPJ CTS								
22	TF550	1			EA	383.15	EA	0.00	383.15
	2 TRUFLOW BLOW OFF HYD								
23	C84-66	1			EA	40.40	EA	0.00	40.40
	1-1/2 CPLG MIPXPJ CTS								
24	54	1			EA	3.35	EA	0.00	3.35
	1-1/2 INSERT CTS								
25	BRC-015	1			EA	7.10	EA	0.00	7.10
	1-1/2 BRZ CAP								
26	38-1130#	1			each	412.00	each	0.00	412.00
	16X1-1/2 IP BRZ SADDLE 17.32-19.19								
27	FB1100-6	1			EA	115.90	EA	0.00	115.90
	1-1/2 BALLCORP IPXPJ CTS								
28	BFA43-666W	1			EA	198.20	EA	0.00	198.20
	1-1/2 ANGLE BALL MTR VLV PJ CTS								
29	A46	1			PR	153.30	PR	0.00	153.30
	MTR ADAPTER 1 TO 1-1/2								
30	B13-444W-HB-34S	1			EA	85.40	EA	0.00	85.40
	1 BALL MTR VLV FIP W/ HDL POINTED TO MTR								
31	A6001640PC12	2			EA	115.70	EA	0.00	231.40
	17X30 ARMORCAST 666 MTR BOX								
32	A6001643DZ	2			EA	73.10	EA	0.00	146.20
	17X30 ARMORCAST 666 CVR FOR DROP-IN LID								

Continued

In accordance with California law AB1953 "Lead Free" initiative, beginning June 15, 2009 we will no longer accept returns for 85/5/5 brass products.

WeAreLeadFree.net

This price is valid for 30 days after the quote date.
 Thank you for the opportunity to provide this quote.

NOTE: This price does not include tax, shipping or installation.



SEL - S EL MONTE, CA
 2024 MERCED AV
 S EL MONTE, CA - 91733
 PHONE: (909)597-7000 FAX: (626)579-1389

Smooth Running Jobs

PROPOSAL

QUOTE DATE	EXPIRATION DATE	QUOTE NO.
03/07/16	04/06/16	411674-00
	JOB ID	PAGE NO.
	PHASE II 16" RELOC	3



CUST #: 12040

BILL TO: LA PUENTE VALLEY COUNTY WATER
 P O BOX 3136
 LA PUENTE, CA 91744-0136

SHIP TO: LA PUENTE VALLEY COUNTY WATER
 15629 HUDSON
 LA PUENTE, CA 91744

INSTRUCTIONS: ATTN: KEITH BOWMAN

SHIP POINT	VIA	SHIPPED	TERMS
SEL - S EL MONTE, CA	OUR TRUCK		NET 30 DAYS

CONTACT	KEITH BOWMAN
MOBILE PHONE	(626) 890-0847
EMAIL	kbowman@lapuentewater.com

LN	PRODUCT AND DESCRIPTION	ORDERED	BO	SHIPPED	UM	PRICE	UM	DISCOUNT	NET AMOUNT	
33	A6000482 9X14 ARMORCAST 666 DROP IN READ LID WATER	2			EA	20.60	EA	0.00	41.20	
33 Lines Total										
									Total	38806.40
									Taxes	3492.58
									Invoice Total	42298.98

This proposal DOES NOT INCLUDE potential freight, fuel surcharges, and/or expediting fees from our vendors.

Delivering *Smooth Running Jobs* from
Start to Finish[®] through our *People, Products, and Systems*



Santa Ana
1313 E. Hunter Ave
Santa Ana, CA 92705
(714) 542-0711

Perris
2282 Goetz Rd
Perris, CA 92571
(951) 657-9573

Coachella
85-998 Jones Court
Coachella, CA 92236
(760) 398-0553



Quotation

EXPIRATION DATE	QUOTE NUMBER
04/22/2016	S100035406

QUOTE TO:

SHIP TO:

LA PUENTE VALLEY COUNTY WATER DIST
P O BOX 3136
LA PUENTE, CA 91744

LA PUENTE VALLEY COUNTY WATER DIST
P O BOX 3136
LA PUENTE, CA 91744

PAGE NUMBER	PO NUMBER	JOB NAME	SALESPERSON	
1 of 1			Dimas Avila	
WRITER	SHIP VIA	TERMS	SHIP DATE	
Dimas Avila	OT OUR TRUCK	NET 30 DAYS	03/08/2016	
ORDER QTY	ITEM NUMBER	DESCRIPTION	UNIT PRICE	EXT PRICE
2ea	441-00001890900	18.46-18.90 #441 FLEX COUP	495.604/ea	991.21
36ea	C350T18	18" CL 350 TYTON DIP	53.356/ea	1920.80
2ea	UFR1400-DA-18-I	18" RESTRAINT ACC KIT FOR DI	215.850/ea	431.70
2ea	MJR1816L	18 X 16 MJ REDUCER C153 L/A	775.572/ea	1551.14
435ea	C350T16	16" CL 350 TYTON D.I.P.	41.319/ea	17973.63
20ea	DI16	16" MJ FIELD LOC DI KIT	276.850/ea	5537.00
6ea	MJ4516L	16" MJ 45 ELL C153 DI L/A	716.206/ea	4297.23
1ea	MJ1116L	16" MJ 11-1/4 ELL C153 DI L/A	687.283/ea	687.28
19ea	SLDP16	16" WDG RESTR PK FOR DI PIPE	147.111/ea	2795.11
2ea	POFT1606	16 X 6 PO X FLG TEE C153 DI	1110.461/ea	2220.92
18ft	C350T06	6" CL350 TJ DIP	13.389/ft	241.00
4ea	SGDPPK06	6" STAR GRIP MJ REST W/ ACC 3000P DI	32.667/ea	130.67
2ea	MJFRW06LU	6" US MJ X FLG RW 316 DI	597.304/ea	1194.61
6ea	NARG06	6 " NON ASB RING GSKT 1/16"	1.778/ea	10.67
2ea	HE6H0608BO	6" X 8" BO HYD EXT 6H	66.667/ea	133.33
1ea	FLBT06F	6" X 2" TAPPED BLIND FLG C110	52.941/ea	52.94
2ea	8506H	#850 FIRE HYD DI 6H (RES)	1272.789/ea	2545.58
SALES TAX NOT INCLUDED QUOTATION PRICING EXPIRES AS NOTED ABOVE			Subtotal	42714.82
			S&H Charges	0.00
			Amount Due	42714.82