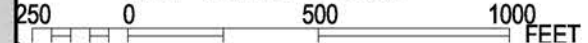


and insurance is available in this community, contact your National Flood Insurance Program at 1-800-638-6620.

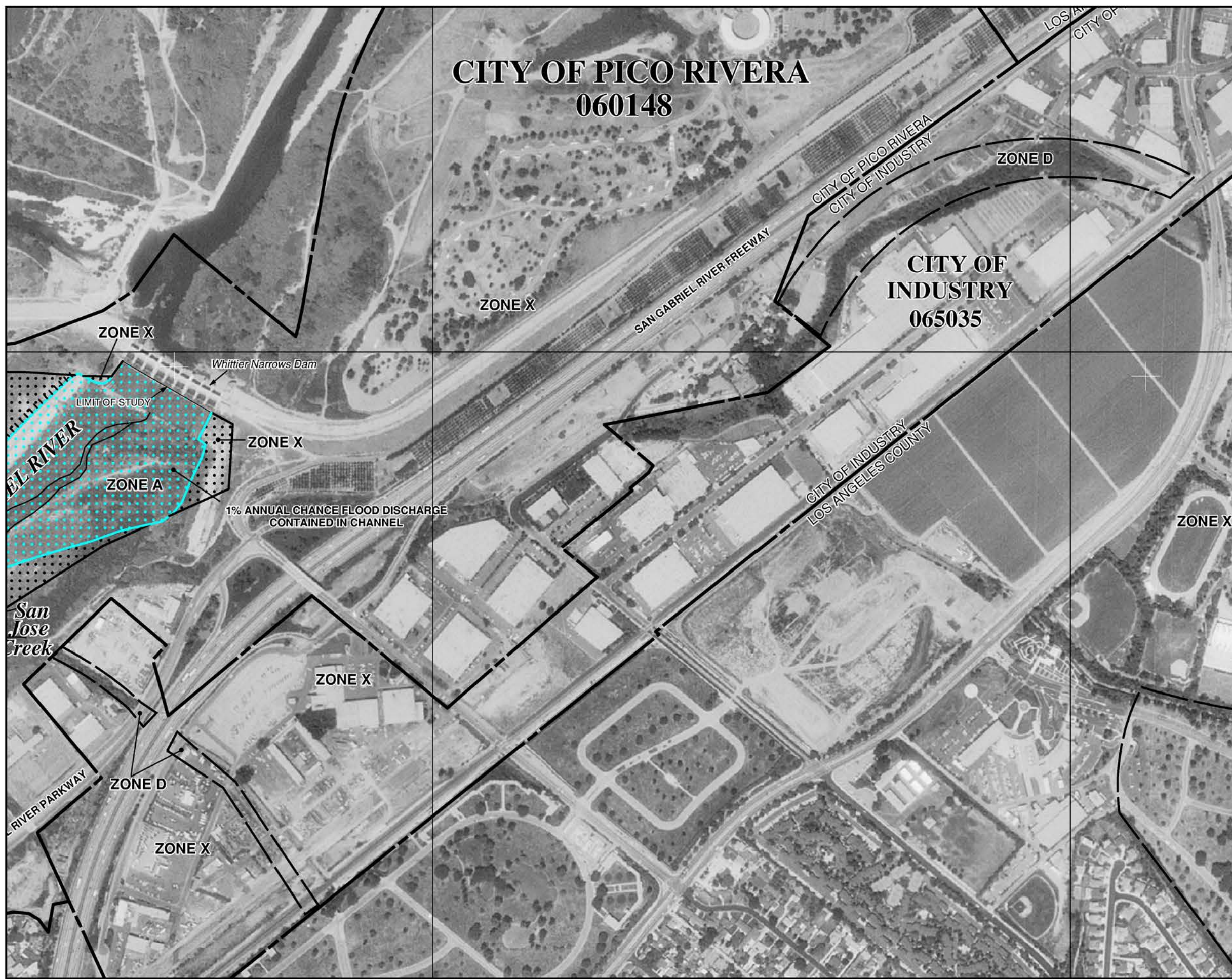


MAP SCALE 1" = 500'



CITY OF PICO RIVERA
060148

CITY OF INDUSTRY
065035



NFIP

PANEL 1668F

NATIONAL FLOOD INSURANCE PROGRAM

FIRM
FLOOD INSURANCE RATE MAP
LOS ANGELES COUNTY,
CALIFORNIA
AND INCORPORATED AREAS

PANEL 1668 OF 2350
(SEE MAP INDEX FOR FIRM PANEL LAYOUT)

CONTAINS:

COMMUNITY	NUMBER	PANEL	SUFFIX
LOS ANGELES COUNTY	065043	1668	F
INDUSTRY, CITY OF	065035	1668	F
PICO RIVERA, CITY OF	060148	1668	F
WHITTIER, CITY OF	060169	1668	F

Notice to User: The **Map Number** shown below should be used when placing map orders; the **Community Number** shown above should be used on insurance applications for the subject community.



MAP NUMBER
06037C1668F

EFFECTIVE DATE
SEPTEMBER 26, 2008

Federal Emergency Management Agency

This is an official copy of a portion of the above referenced flood map. It was extracted using F-MIT On-Line. This map does not reflect changes or amendments which may have been made subsequent to the date on the title block. For the latest product information about National Flood Insurance Program flood maps check the FEMA Flood Map Store at www.msc.fema.gov